

dermaOXY

**User- and treatment manual for
professionals**



Contents

| | |
|---------------------------------|-----------|
| 1. dermaOXY machine | 3 |
| 2. Air Brush and hose | 5 |
| 3. Before the treatment | 5 |
| 4. Facial treatment | 6 |
| 5. Post Facial Treatment | 9 |
| 6. Hair Treatment | 9 |
| 7. Post hair treatment | 11 |
| 8. Product description | 12 |
| dermaOXY skin range | 12 |
| dermaOXY hair range | 14 |

1. dermaOXY machine

Congratulations on the purchase of your new dermaOXY machine!

You have received a start package containing an oxygen machine, air brush, hose as well as treatment packages, etc. An air moisture container with a green hose and an inhalator with a green hose are enclosed with the oxygen machine.

Since we only recommend the use of the oxygen machine for dermaOXY treatments, the air moisture container and inhalator with green hoses must be immediately stored. If the machine is used for medical oxygen treatment, a doctor must be contacted before use. Children, people with mental disorders and disabled people may only use the oxygen machine under supervision.

Here are some safety instructions regarding the oxygen machine:

- The machine must always stand upright. The machine may not be laid down or turned upside down
- The machine must not be exposed to extreme heat, cold or water
- The machine must stand on the floor with at least a 10cm distance between walls or furniture
- The machine must not be covered during use or used as a table.
- The ventilation openings on the machine must never be covered
- Only approved technicians may dismantle the oxygen machine
- Do not use the oxygen machine in wet rooms or under the shower
- Always be present when the oxygen machine is switched on
- The machine may only be used for purposes as stated in this manual
- The machine must not be used with other equipment than that stated in this manual
- The machine must not be connected to other oxygen machines.

IMPORTANT!

It is strictly prohibited to smoke or use other forms of open fire in the vicinity of the oxygen machine. Oxygen is extremely flammable and can ignite flammable material as well as cause serious burns on people and material.

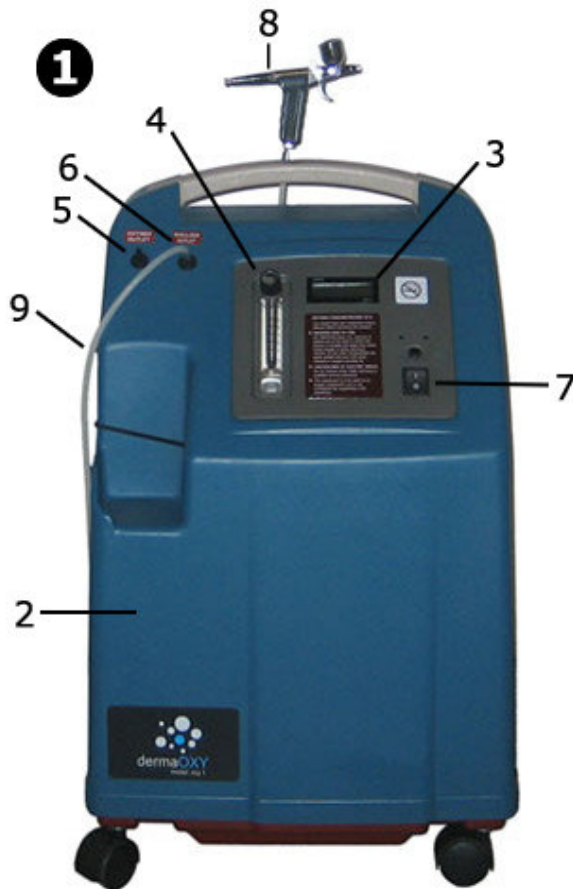
When you start the machine, you must leave it on for minimum 5 minutes. Do not constantly switch on and off. This reduces the lifetime of the machine.

A service of the oxygen machine once a year is recommended. Contact your distributor and make an appointment.

Like other electronic equipment, the oxygen machine can be affected by radio frequency (RF).

For further information, see the booklet (Oxygen Concentrator – User’s manual) enclosed.

Setting up of the machine:



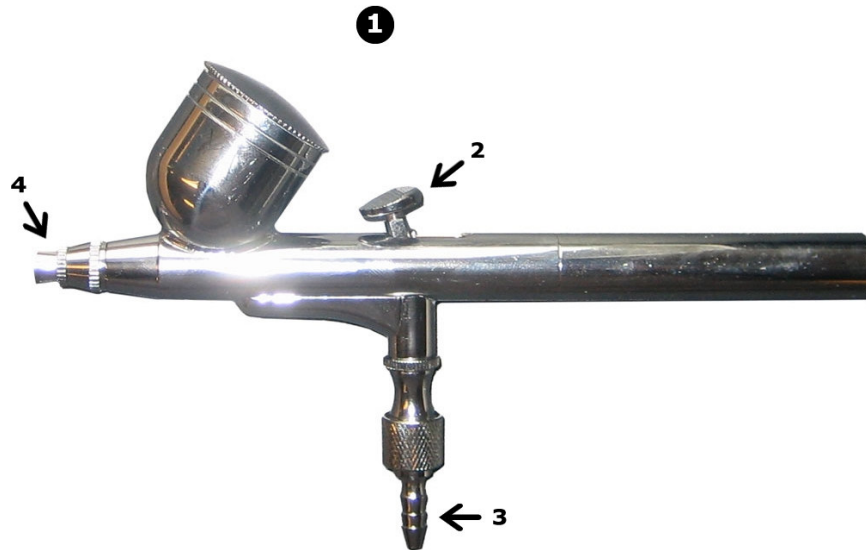
Start by checking whether the machine (1) is damaged. Check for scratches or breakage of the protective cover (2), the digital screen (3), the l/min gauge (4), the oxygen outlet (5) and the nebulizer outlet (6).

Place the plug in the socket and switch the machine on with the I/O button (7). “Hello” can now be seen on the digital screen (3) and in a few seconds the timer will start. Normally the screen will display a few hours as all machines are tested before they are sent into the market. Let the machine run for 5-10 minutes. Switch off the machine. The machine is now ready for use.

Connect the air brush (8) to the hose (9).

Important: See the next chapter – “2. Air brush and hose”. Place the hose (9) down over the Oxygen outlet (5) for maximum oxygen treatment or nebulizer outlet (6) for maximum air treatment under strong pressure. Switch the machine on, check the l/min gauge (4), turn it up or down so it reads 3 l/min O₂.

2. Air brush and hose



You have also received an air brush (1). When you have unpacked the air brush, pull back lightly on the trigger (2) with your thumb try to do the same while pressing the trigger down; if this can be done without resistance the air brush is ready for use. Now you can attach the hose to the hose nut (3).

When the trigger (2) is pulled down **in its initial position** only oxygen will come out. Is the trigger pulled down **and** pulled back liquid (serum) and oxygen will come out.

Cleaning of the air brush: Fill the small container with lukewarm water, start the oxygen machine, turn the oxygen machine up to 5 l/min O₂. Pull on the trigger down and pull it back and empty the water from the air brush into a bowl. The machine is then ready for use.

Clean the outermost head at the tip (9) for remnants of serum/skin/make-up when necessary. In some cases, the tip can become blocked. Screw off the 2 heads at the tip (4), rinse and dry and attach.

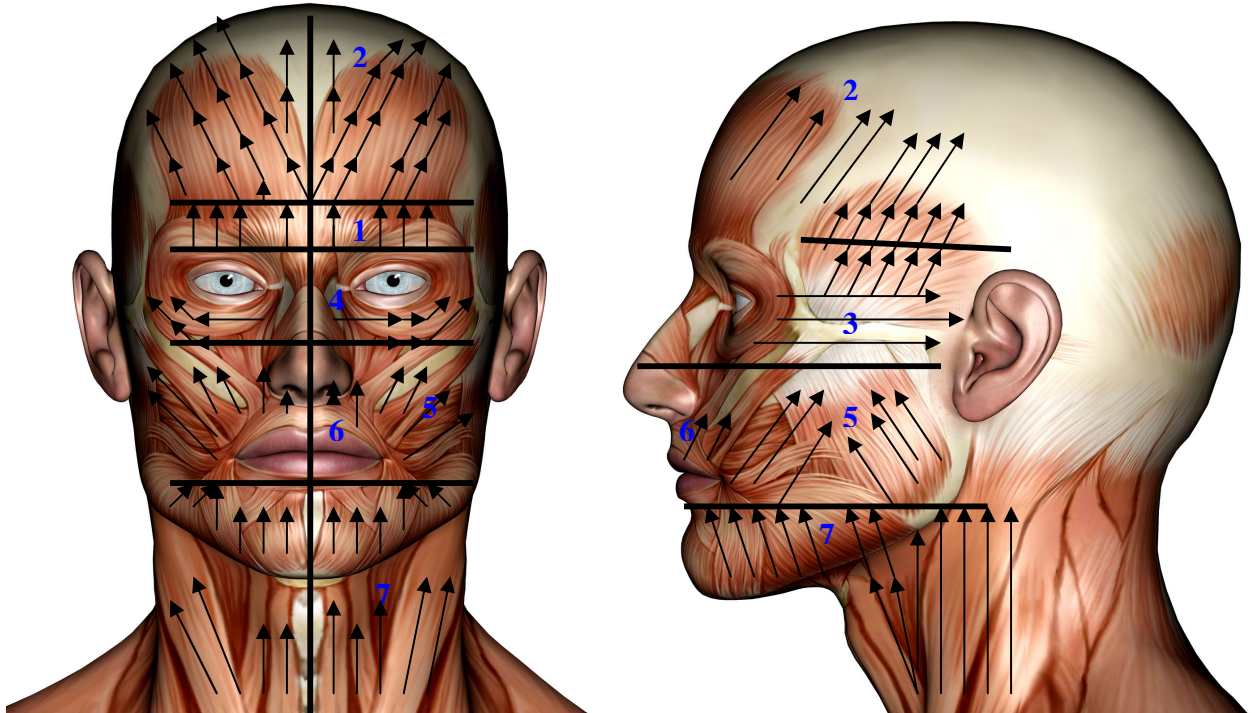
It is a good idea to have an extra air brush available.

3. Before the treatment

Before you begin the treatment, it is important to:

1. **Cleanse the skin thoroughly - Wash the hair with dermaOXY shampoo**
2. **Perhaps remove dead skin cells (peeling)**
3. **Inform the client about the treatment process**

4. Facial Treatment



Copyright MedicTinedic ApS. Denmark

It is important to shake the bottle of serum well before use.

Hold the air brush in your left hand; remove the cap on the small container on the air brush with your right hand. Push on the pipette of either dermaOXY Hyaluronic serum or dermaOXY Syn serum. Place the pipette over the container and push the serum out. This must be done twice. Place the lid on the container. Start the machine. Check that the machine is on 3 bar. Aim at the back of your hand with the air brush. Pull the trigger on the air brush down in its initial position and feel whether oxygen is released. Pull the trigger down and back and feel whether the serum is released onto the back of your hand. Release the trigger.

The treatment takes place in 2 steps:

1. Serum is applied to the skin. Press the trigger down and back. Move the tip of the airbrush approx. 1-2 cm above the skin, so you can see the skin being moist with serum. Beware that the serum will not be sprayed directly into the eye.
2. Serum is oxidized and pressed into the skin. Press down the trigger in its initial position. It is important that all areas are treated with oxygen 2-3 times immediately after each other (the trigger down in its initial position). If there is an area that needs more, each movement can be done up to 5 times.

Start by treating one half of the face. Apply the serum on one half of the face. (press trigger into its initial position and back). If an area should need more serum later during the treatment, it can always be applied in this way.

Start with the **eyebrow** (area 1): Ask the patient to gently close his/her eyes. Lift/stretch the skin with one hand so the eyebrow will be lifted. The tip of the airbrush (trigger down in its initial position) is then moved with **small rapid movements** from the bottom and upwards very close to the patient's skin, approx. 1-2 mm from the skin – it is OK to touch the skin. This is done 2-3 times. This normally contributes to an immediate lift of the eyebrow. This can seem quite surprising for both the patient and the therapist.

Forehead (area 2): Lift/stretch the skin with one hand. Press the trigger down in its initial position so only oxygen is released and follow the direction arrows on the drawing **very slowly** approx. 1 cm per second –very close to the to the patient's skin approx. 1-2mm from the skin - it is OK to touch the skin. Continue moving from the bottom upwards. Lift the air brush slightly away from the skin when you move it down the starting point. This is done 2 times at the same place. At the very wrinkles small circulars movements can be made with the air brush afterwards while stretching the skin with the other hand.

The side of the eye (area 3): Lift/stretch the skin with one hand. The tip of the airbrush (trigger down in its initial position) is then moved with **small rapid movements** from the bottom and upwards very close to the patient's skin, approx. 1-2 mm from the skin – it is OK to touch the skin. This is done 2-3 times. This is a very important area therefore subsequently make 2 **slow movements** at each place from outer corner of the eye out and up. It is important to go all the way from where the wrinkles originate. This means that you in some cases must go beyond the hairline. At the very wrinkles small circulars movements can then be made with the air brush.

Below the eye (area 4): Ask the patient to gently close his/her eyes. Press the trigger down in its initial position and move **slowly** the air brush 2-3 times – approx. 1-2 mm from the skin (it is OK to touch the skin), horizontally from the bridge of the nose just below the eye up and past the eye

Cheek/Cheekbone (area 5): Lift/stretch the skin with one hand. Press the trigger down in its initial position and move **slowly** the air brush 2-3 times – approx. 1-2 mm from the skin – it is OK to touch the skin. At the very wrinkles small circulars movements can then be made with the air brush while stretching the skin. The cheeks will appear fuller and lifted.

Above the lip/lip (area 6): Ask the patient to close his/her mouth and lip lightly. Press the trigger down in its initial position. Start on the lip line and make small **slow movements** towards the nose. Some oxygen may enter the mouth and this can give a strange sound and tickle a little. Repeat once or twice.
On the lip: apply serum (press the trigger down and back). Press the trigger down in its initial position and move the air brush **slowly** 2 times each place so each square millimetre is treated 2 times. The lip looks fuller after treatment.

Chin, lower jaw, neck (area 7): Press the trigger down in its initial position and make each movement **slowly** approx. 1 cm per second 2 times each place from the bottom and upwards (please follow the direction arrows on the drawing).

One half of the face is now treated. Get the customer to see the difference in a mirror before proceeding with the other half of the face in a similar way. Now check if there are areas that have not been treated.

The most important areas are:

Between the eyes on the procerus muscle.

Around the eyes, on the orbicularis oculi muscle of the frontal bone.

Next to the eyes on the auricularis muscle.

Above and under the lips on the orbicularis oris muscle.

Across the cheek bone on the levator labii superius, the zygomaticus minor and zygomaticus major muscles.

If there is more serum left, then spray the remainder onto the most important areas and let it penetrate. Do not wipe the serum off. Conclude by giving a thin layer of dermaOXY Hydra on the face followed by dermaOXY Eye cream and dermaOXY Day cream.

Ask the patient to stand up and follow the patient to a mirror and show where the significant differences are. Ask the patient to feel how much fuller the cheeks have become, how much moisture has been added and the elasticity of the skin. Even better, if you have a skin moisture gauge then take a measurement before and after. Normally the moisture level will have increased by approx. 10% after the first treatment. If you have a Skin Analyser, you can take special pictures before and after and follow the skin in all the phases. Your dermaOXY distributor can obtain these special instruments but they are not an absolute necessity.



Before treatment



After 20 minutes

The patient needs to do his/her part until the next treatment, which will take place one week later. See under section 5 “Post treatment of the face”.

The patient must sign up for 6 treatments. One treatment per week for 6 weeks. Some can be satisfied with 4 treatments and others may perhaps need up to 12 treatments. Subsequently, it is recommended that the patient has a treatment every month or a treatment every second month.

Important:

- If oxygen continues to come out of the air brush even though you have released the trigger, this means that the washer is broken. These washers can be acquired from the distributor. The treatment can continue even though oxygen is released constantly.
- If the patient feels discomfort, then stop the treatment. There are no allergens or parabens in the products, but even so some patients can

have a reaction. If the product accidentally gets into the eye, rinse the eye with cold water.

- If the alarm sounds in the machine, then stop the treatment and contact the distributor.

5. Post treatment of the face

Morning: Wash the face with a mild soap

Eyes: Begin with the Eye cream. Use only a little. Dab the cream onto the bone under the eye in an outward movement.

Hydra: A thin layer of Hydra is then applied to the entire face.

Day: Finish off by applying the protective and nourishing Day cream.

Evening: Wash the face with a mild soap. Cleanse the skin thoroughly with skin tonic.

Eyes: Begin with the Eye cream. Use only a little. Dab the cream onto the bone under the eye in an outward movement.

Hydra: A thin layer of Hydra is then applied to the entire face.

Night: Finish off by applying the nourishing and collagen-forming Night cream.

6. Hair Treatment



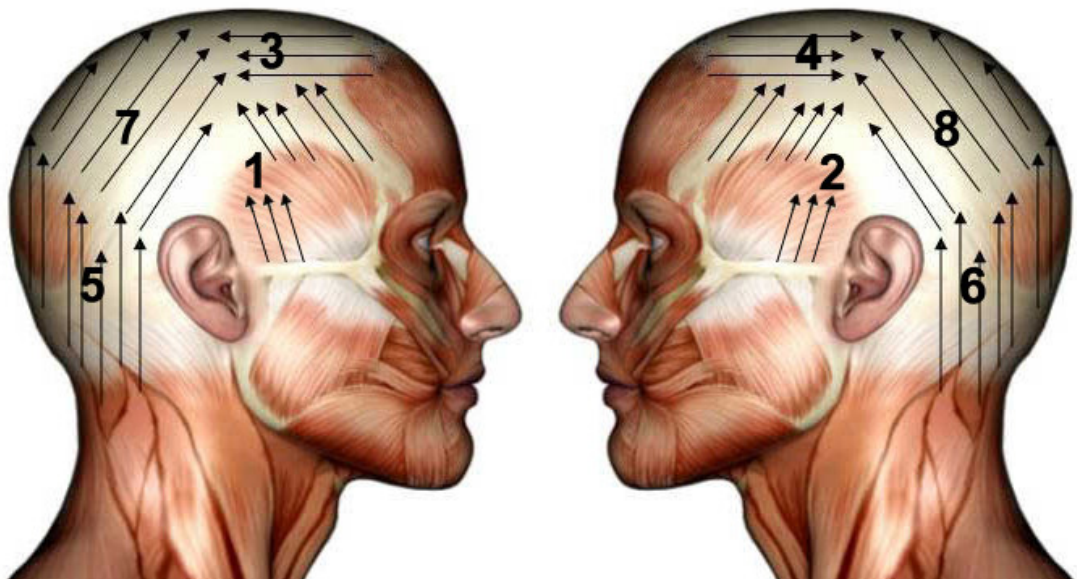
It is important to shake the bottle of serum well before use.

Hold the air brush in your left hand and remove the cap on the small container on the air brush with your right hand. Press the pipette of the dermaOXY Hair serum. Place the pipette over the container and push the serum out. This must be done twice. Place the lid on the container.

Start the machine. Check that the machine is on 3 bar. Aim at the back of your hand with the air brush. Pull the trigger on the air brush down in its initial position and feel whether oxygen is released. Pull down and back and feel whether the serum is released onto the back of your hand. Release the trigger.

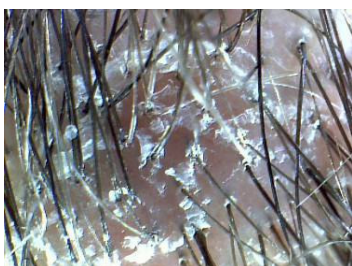
It is important that all areas are treated with oxygen 2-3 times immediately after each other (the trigger down in its initial position).

Aim down into the scalp of the client. Pull the trigger down and back and distribute the serum under pressure over the entire scalp.



Begin in area 1. Pull the trigger down in its initial position and follow the arrows twice after each other, quite slowly, approx. 1 cm per second – very close to the patient’s scalp, approx. 1-2 mm from the skin until the entire area 1 has been treated. This is repeated 3-5 times if the scalp is very dry or if there is dandruff. If there is not enough serum on the scalp, then pull the trigger down and back. Continue to area 2 and further on up to and including area 8 according to the diagram.

Take a look at the before and after picture taken with the first treatment of the scalp with dry/scaly skin.



Before treatment



After 20 minutes

If there is more serum left, then spray the remainder onto the most important areas (dry and dandruff scalp) and let it penetrate.

If you have a skin moisture gauge, then take a measurement before and after. Normally the moisture level will have increased by approx. 10% after the first treatment. If you have a Skin Analyser, you can take special pictures before and after and follow the scalp/hair in all the phases. Your dermaOXY distributor can obtain these special instruments but they are not an absolute necessity.

The client must also do his/her part until the next treatment the week after. See under section 7 "Post treatment of the hair".

The patient must sign up for 6 treatments; one treatment per week for 6 weeks. Some can be satisfied with 4 treatments and others may perhaps need up to 8 treatments. Subsequently, it is recommended that the patient has a treatment every month or a treatment every second month.

Important:

- If oxygen continues to come out of the air brush even though you have released the trigger, this means that the washer is broken. These washers can be acquired from the distributor.
The treatment can continue even though oxygen is released constantly.
- If the patient feels discomfort, then stop the treatment. There are no allergens or parabens in the products, but even so some patients can have a reaction. If the product accidentally gets into the eye, rinse the eye with cold water.
- If the alarm sounds on the machine, then stop the treatment and contact the distributor.

7. Post treatment of hair

Shampoo: Use approximately one teaspoon of shampoo, massage it well into the hair and rinse. Repeat. At the most, wash the hair every second day.

Hair tonic: Use approximately one teaspoonful tonic in towel-dried hair or dry hair. Massage into the hair and scalp. The tonic must not be rinsed out. Use the tonic every second day.

8. Product description

8.1 dermaOXY skin range

Serums:

Hyaluronic serum: Reduces wrinkles, gives smoother and fresher skin.

Syn serum: Blocks the muscles ability to contract by which an immediate reduction of wrinkles on the skin is achieved.

Creams:

Day: Restoring anti-wrinkle day cream with Hyaluronic acid.

Night: Especially nourishing and restorative night cream that also has an anti-ageing effect.

Eyes: Eye cream that reduces the fine lines around the eyes and adds and restores moisture.

Hydra: Adds immediate moisture to the skin. It is used as a supplement to the day and/or night cream.

Ingredients overview – dermaOXY skin range

| Ingredient | Hyaluronic Serum | Syn Serum | Day | Night | Eye | Hydra | Effect |
|---|------------------|-----------|-----|-------|-----|-------|---|
| Hyaluronic acid | X* | x* | x | x | x | x* | *Hyaluronic Acid and Sodium Hyalluronate. Binds large amounts of moisture in the skin and forms a shield that increases the skin's elasticity and softness. Hyaluronic acid is a natural element in the skin's connective tissue. |
| Magnesium Ascorbyl Phosphate | x | x | x | | | x | Vitamin C, strong antioxidant. Protects the skin's cells against the free radicals, DNA and UV radiation. Increases the skin's elasticity. Stimulates the collagen in the skin's connective tissue and has an anti-ageing effect. |
| Small peptides Triptide | x | | x | x | x | | Reduces all forms of wrinkles and stimulates the skin's collagen production which is reduced with age and which contributes to the forming of wrinkles. |
| Palmitoyl oligopeptide | x | x | | | | | Stimulates cell growth and reduces deep wrinkles. |
| Tripeptide-7 | x | x | | | | | Affects the collagen and elastin production in the skin. |
| Pepha-Ctive | x | | | | | | Micro-algae extract that increases the cells' oxygen absorption. |
| Colostrum Whey | x | x | | | | | Algae extract that increases cell renewal and evens out wrinkles. Supplies the skin with nutrients. Rich in amino acids, minerals and vitamins. |
| ECOCERT | x | x | x | x | | | Soya protein that is rich in amino acids and increases oxygen absorption. |
| Vitamins A,B1,B2,B3,B6,D,E ,F A,E,F,H | x | x | | x | x | x | Vitamin A (Retinol) has an anti-ageing effect and regulates and promotes cell formation. It counteracts trans epidermal water loss (TEWL) and makes the skin suppler by increasing the thickness of the epidermis. Prevents the negative effects of UV light on the skin. The vitamin A penetrates deeply into the upper skin layer where it stimulates the formation of lost collagen so wrinkles are smoothed out and the skin has a more youthful appearance. An effective antioxidant that counteracts blocked pores and contributes to a healthier appearance. |
| Omega 3 and 6 fatty acids | x | x | | x | | | |
| Squalene | x | x | | | | | With Enzyme Catalase and moisturiser. |
| Honeysuckle | x | x | x | x | x | x | Natural preservative |
| Q10, vitamin E | | x | | x | x | | In synergy, the powerful antioxidants counteract the free radicals' break down of the skin's cells and the skin's lipid barrier is simultaneously protected. Vitamin E also functions as a natural moisture binder. |
| Green Tea | | | x | x | | | Antioxidant - tightens up and stimulates. |
| Cornflower | | | | x | x | | Has a calming and relaxing effect. |
| Macadamia nut oil Mango pit butter | | | | x | | | Gives the cream a wonderful consistency and it adds vitamins and essential oils. Both oils have good penetration. |
| Complex of peptides, amino acids and mineral salts | | | x | x | | | Boosts oxygen absorption and stimulates cell renewal by emulating the cells' own metabolism. |
| Tetrapeptide 7 | | | | | x | | Reduces bags and dark rings under the eyes by increasing the skin's elasticity and reducing moisture loss. |
| Wheat germ oil | | | x | | x | | Increases the moisture content in the skin. |
| UV filter | | | x | | | | Added |
| Special peptide complex | | x | | | | | A significant content of peptide complex which emulates the muscle paralyzing substance that is found in the Temple Viper snake. The special amino acid composition blocks the muscles ability to contract by which an immediate reduction of wrinkles on the skin is achieved. |
| Superoxide dismutase (SOD) | | x | | | | | One of the strongest antioxidants found on the market. |
| Parabens are not | X | x | x | x | x | x | |

8.2 dermaOXY hair range

Serum:

Hair: Stimulates cell renewal and increases the growth, strength and elasticity of the hair. It protects against oxidation and ageing and maintains the colour of the hair.

Hair products:

Shampoo: Stimulates cell renewal and increases the growth, strength and elasticity of the hair.

Hair Tonic: Stimulates the scalp and increases the blood flow so the scalp becomes healthier and the hair's growth and pigmentation are strengthened.

Ingredients overview – dermaOXY hair range

| Ingredient | Hair serum | Shampoo | Hair tonic. | Effect |
|-------------------------------|-------------------|-------------------|---------------|---|
| Hyaluronic acid | X | x | | Binds large amounts of moisture in the skin and forms a shield that increases the skin's elasticity and softness. Hyaluronic acid is a natural element in the skin's connective tissue. |
| Phylderm vegetal™ | X | x | | A particularly active complex of peptides, amino acids and mineral salts that boost the cells oxygen absorption and energy level in the cells. Stimulates cell renewal and increases the strength of the hair. |
| Squalene | x | | | With Enzyme Catalase and moisturiser. Also functions as a transporter – becomes part of the skin's sebum and in so doing provides a natural protection for the skin. |
| Wheat germ oil | x | | | Increases the moisture content in the skin. Rich in vitamins A, D and E and essential fatty acids and lecithin. Moisture binding with a softening effect. Especially good for irritated and dry skin and scalp. |
| Macadamia nut oil | X | | | Is easily absorbed by the skin; rich in Lipo proteins, omega 3, 6 and 9 fatty acids. Protects the cell membrane. |
| Carrot oil | x | | | Precursor to vitamin A. |
| Vitamins | A B3,B5, E, F, H, | A B3,B5, E, F, H, | A, C, E, F, H | Contributes to the nourishment of the hair and scalp. Vitamins C and E counteract oxidation and ageing. Vitamin E adds the essential fatty acids that are a condition for the growth of the hair. Vitamin H counteracts skin disorders and reduces hair loss. |
| Malva plant | x | | | Swiss Alp plant with antiseptic and anti-inflammatory qualities. Powerful antioxidant which together with vitamin E counteracts the forming of free radicals in the skin. Malva is rich in amino acids, vitamins C, B1, B2 and flavonoids. |
| Small peptides (teripeptides) | x | | | Syn-Coll. Reduces all forms of wrinkles. Stimulates the skin's collagen production and compensates for lack of collagen in the skin. |
| Anti-ageing hair complex | x | x | | Strengthens the individual strand of hair and adds natural shine to the hair. Also suitable for coloured hair as it contributes to retaining and maintaining the colour. Large content of vitamin E protects against oxidation and ageing. |
| Aloe Vera | x | x | | A significant content of hand-picked, cold pressed Aloe Vera juice containing a number of valuable substances, e.g. rare enzymes, antibiotics, protein. Contains 18 different amino acids (hair-healing hormones) as well as a number of essential minerals that strengthen the hair. |
| Japanese Blood Grass | x | x | | Rich in calcium which contributes to maintaining the osmotic pressure (water balance) in the cells and in so doing regenerate the moisture balance of the scalp. Especially good effect on dry scalp. |
| Plant complex | | | x | Extract of hops, camomile, lemon balm, yarrow and fennel which are particularly suitable for sensitive scalps. |
| Pantothenic acid group | | | x | Active complex of vitamins, especially D Panthenol, calcium pantothenate and vitamin B1, which in combination have a beneficial effect on infections and strengthen the growth and pigmentation of the hair. |